

USB Flash Memory TransMemory-EX II™

Security Software User Manual

TOSHIBA Corporation

Semiconductor & Storage Products Company

Contents

Chapter 1: Introduction.....	2
Chapter 2: System Requirements.....	4
Chapter 3: Security Software Installation.....	5
1. Security Software Installation.....	5
1.1. Installation from the Pre-Installed Version.....	5
1.2. Installation via the Internet.....	6
Chapter 4: Security Software Usage	9
1. Security Software Startup and Settings.....	9
1.1. Security Software Startup	9
1.2. Setting Protected Area	11
1.3. Setting Initial Password	14
1.4. Changing Password.....	17
2. Security Software Login and Logout	20
2.1. Protected Area Login	20
2.2. Protected Area Logout.....	22
2.3. Finishing Security Software Operation.....	23
2.4. Completely Exit Security Software	24
Chapter 5. Security Software Practical Usage.....	25
1. Format the TransMemory-EX II™ to FAT32	25
2. Switching Between Multiple TransMemory-EX II™ Devices Connected Simultaneously.....	27
Chapter 6: Frequently Asked Questions.....	28
Chapter 7: Contact Us.....	30

Chapter 1: Introduction

Thank you for purchasing USB Flash Memory (TransMemory-EX II™). This device is equipped with the following features.

- The TransMemory-EX II™ is a USB Flash Memory device using Toshiba NAND Flash Memory. It is usable as a removable disk for personal computers.
 - The TransMemory-EX II™ is bus powered and does not require an AC power adapter.
 - EX II Pad Locker (referred to below as "Security Software") can be used with the TransMemory-EX II™ to perform the following functions.
 - Password protection for files
 - FAT32 formatting function for models even above 64 GB
 - Capability to switch between multiple devices simultaneously connected to one computer
 - * Except files you have saved for personal enjoyment, copyrighted or rights-reserved materials cannot be used without permission.
 - * While formatting with Security Software do not vibrate or bump the device, turn off the power, start or restart the computer or enter standby or sleep mode. If these occur while formatting with Security Software, please format with Security Software again.
 - * When using Security Software and operating the TransMemory-EX II™ Protected Area with the TransMemory-EX II™ connected, the following computer operations may cause errors.
 - Starting up, restarting, waking up from standby or sleep modeIf any of these operations occur, remove the TransMemory-EX II™ from the computer, re-connect the TransMemory-EX II™ to the computer, and login to the Protected Area again.
 - * Protected Area login may not be possible if you are using Windows Vista® OS with the ReadyBoost™ function set to Free Area. In such a case, turn off the ReadyBoost™ function, remove the TransMemory-EX II™ from the computer, re-connect the TransMemory-EX II™ to the computer, and login to the Protected Area again.
 - * When using Windows Vista® OS, do not set the ReadyBoost™ function to Protected Area.
-

TOSHIBA

EX II USB Flash Memory Security Software User Manual

This guide contains Security Software installation and usage instructions. Before using Security Software, please read this guide carefully and use correctly.

- * Some images in this guide may differ from those on your screen.
- * Design and specifications may change without notice.

T r a d e m a r k s

- Microsoft® and Windows® are registered trademarks in the U.S. and other countries of Microsoft, Inc., U.S.A.
- Intel® and Pentium® are registered trademarks of Intel Corporation in several countries.
- The USB logo is trademarked.
- The names of other companies and products listed herein are the trademarks and registered trademarks of each company.

Chapter 2: System Requirements

Correct operation of the TransMemory-EX II™ requires the following system conditions.

- Compatible Hardware

- 266 MHz or faster Intel® Pentium® II CPU
- 800 KB or greater hard disk space
- USB port conforming to USB specifications
(Operability is not guaranteed for individually made or modified PCs.)

- Compatible Operating Systems

- Microsoft® Windows® XP Professional Service Pack 2 or higher
- Microsoft® Windows® XP Home Edition Service Pack 2 or higher
- Microsoft® Windows Vista® Ultimate
- Microsoft® Windows Vista® Enterprise
- Microsoft® Windows Vista® Business
- Microsoft® Windows Vista® Home Premium
- Microsoft® Windows Vista® Home Basic
- Microsoft® Windows® 7 Ultimate
- Microsoft® Windows® 7 Enterprise
- Microsoft® Windows® 7 Professional
- Microsoft® Windows® 7 Home Premium
- Microsoft® Windows® 7 Home Basic
- Microsoft® Windows® 7 Starter
- Microsoft® Windows® 8 Enterprise
- Microsoft® Windows® 8 Pro
- Microsoft® Windows® 8

When using with Microsoft® Windows® XP, login to the OS with an Administrator user ID. Users logged in without Administrator status will receive an error.

The TransMemory-EX II™ is not compatible with operating systems other than Microsoft® Windows®.

Chapter 3: Security Software Installation

In this section, installation of the Security Software for use with the TransMemory-EX II™ is explained. Please follow the instructions below to correctly prepare for usage.

1. Security Software Installation

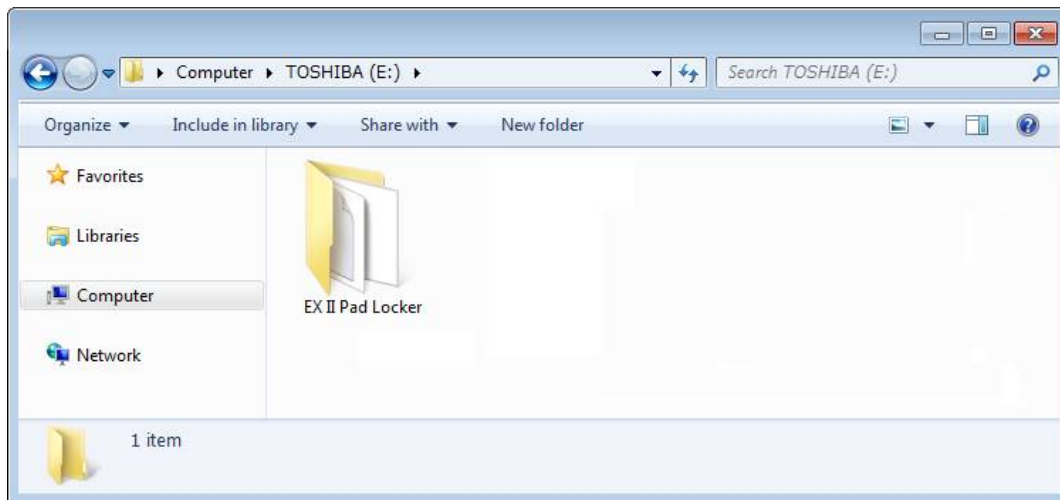
If the Security Software is already installed on the TransMemory-EX II™, please refer to page 5, 1.1. Installation from the Pre-Installed Version.

If the Security Software is not installed or has been deleted, please refer to page 6, 1.2. Installation via the Internet.

Quit all other applications before installing Security Software.

1.1. Installation from the Pre-Installed Version

- 1) Connect the TransMemory-EX II™ to the computer.
- 2) Copy the "EX II Pad Locker" folder from the drive onto your desktop.



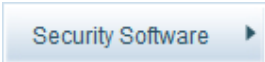
Installation is complete.

1.2. Installation via the Internet



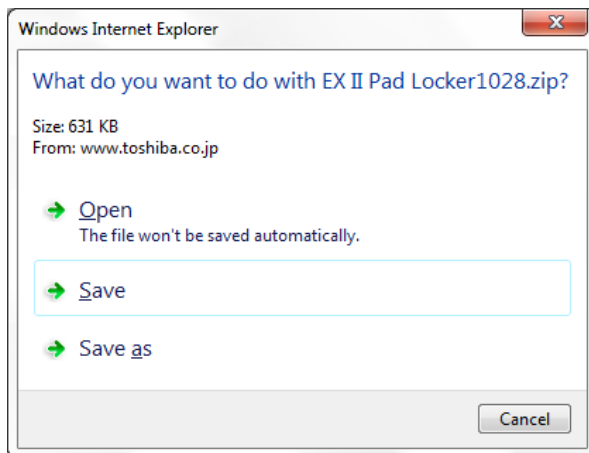
Note: When downloaded from the web, the Security Software is compressed in zip format. The file must be unzipped before use. Operating the software without unzipping may cause malfunction.

- 1) Access the web download page (refer to the package for the URL).
- 2) Click on the "Security Software" icon on the TransMemory-EX II™ information page.



Security Software ▶

- 3) Click "Save" in the following dialogue window.



* Example using Internet Explorer9

- 4) Once the download completes, click "Open Folder" in the following dialogue.

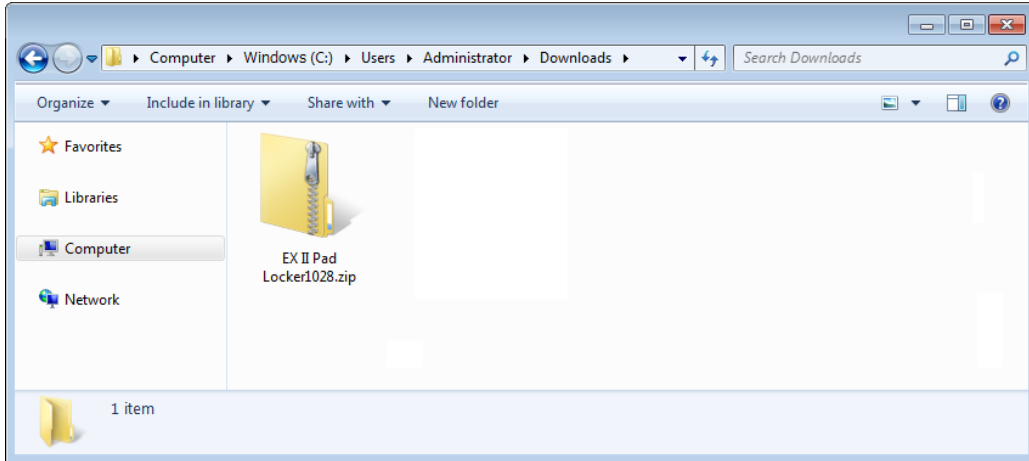


* Example using Internet Explorer9

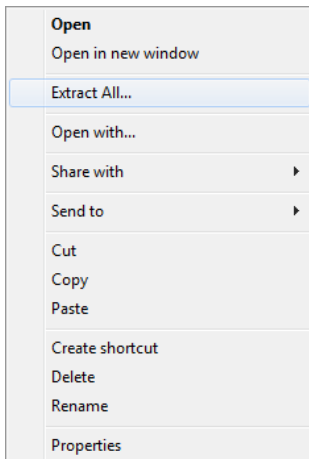
TOSHIBA

EX II USB Flash Memory Security Software User Manual

5) Once the folder opens, select and right-click on "EX II Pad Locker1028.zip".



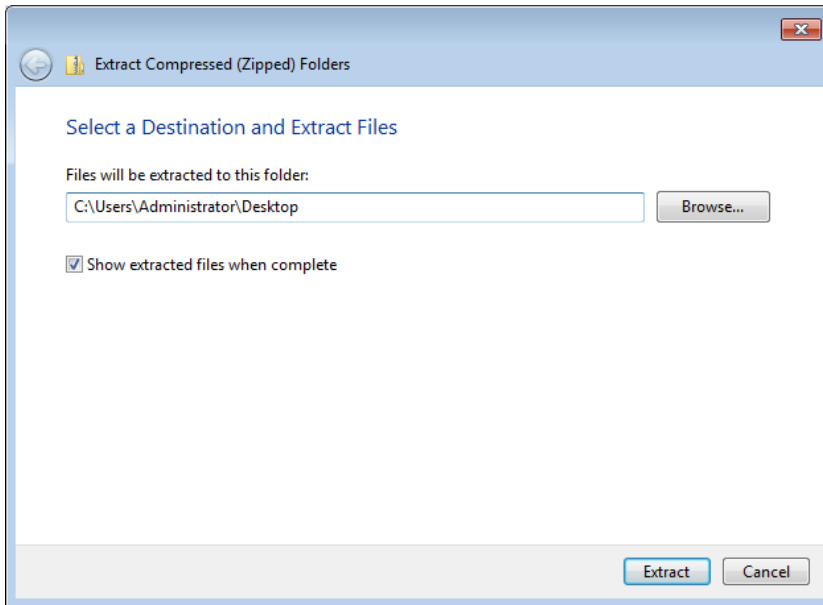
6) Click "Extract All..." in the context menu.



TOSHIBA

EX II USB Flash Memory Security Software User Manual

7) Click "Browse..." and select the Desktop. Then click "Extract".



Installation is complete.

- * Once installation is complete, you may delete the zipped "EX II Pad Locker1028.zip" file from step 5.

Chapter 4: Security Software Usage

In this section, usage of the Security Software for use with the TransMemory-EX II™ is explained. Please follow the instructions below to perform initial settings.

1. Security Software Startup and Settings

Be sure to connect the TransMemory-EX II™ to the computer before opening Security Software and making settings.

1.1. Security Software Startup



Note: When downloaded from the web, the Security Software is compressed in zip format. The file must be unzipped to use. Operating the software without unzipping may cause malfunction.

- 1) Double-click on the Security Software icon "EX II Pad Locker.exe" to open Security Software.

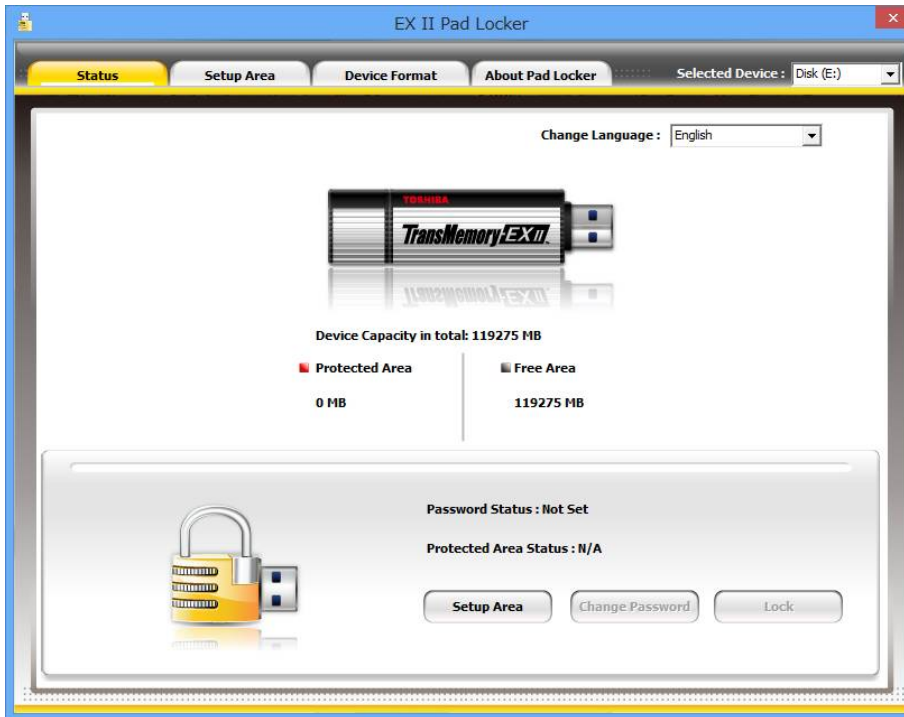


EX II Pad
Locker.exe

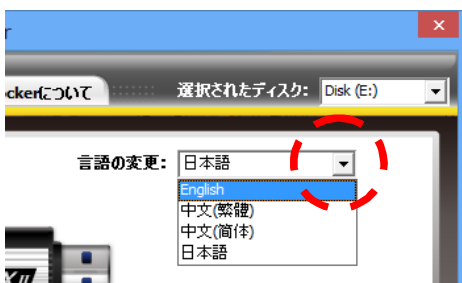
TOSHIBA

EX II USB Flash Memory Security Software User Manual

2) Security Software will start up.



If English is not displayed, click the “ (pull-down menu)” and select "English".



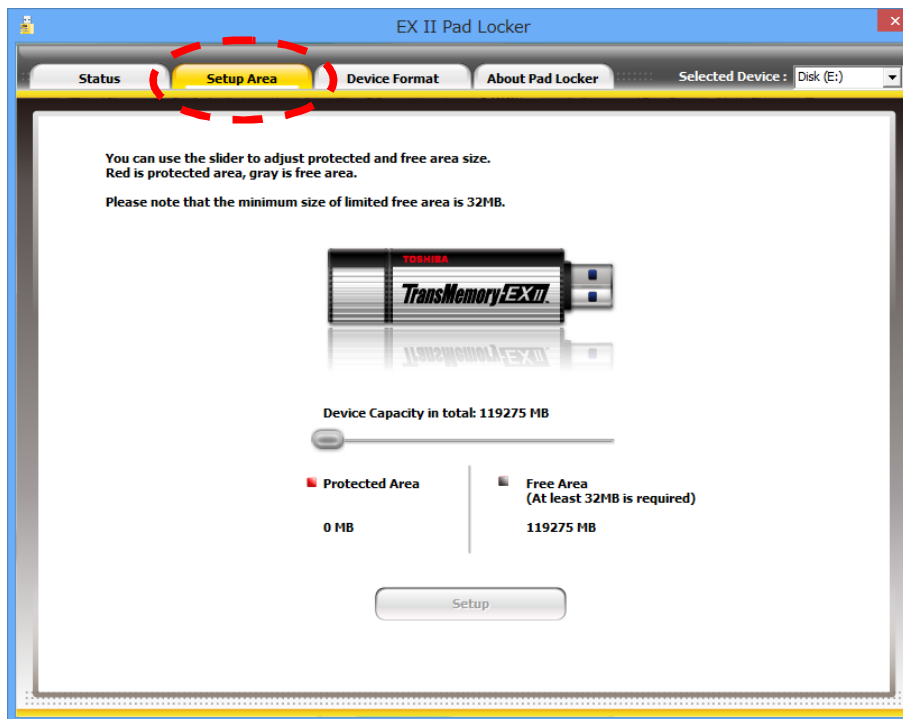
1.2. Setting Protected Area



Caution! Performing this setting formats both the Protected Area and the Free Area, and will erase all data and password settings in both areas.

Before formatting, be sure to backup all needed data on another drive.

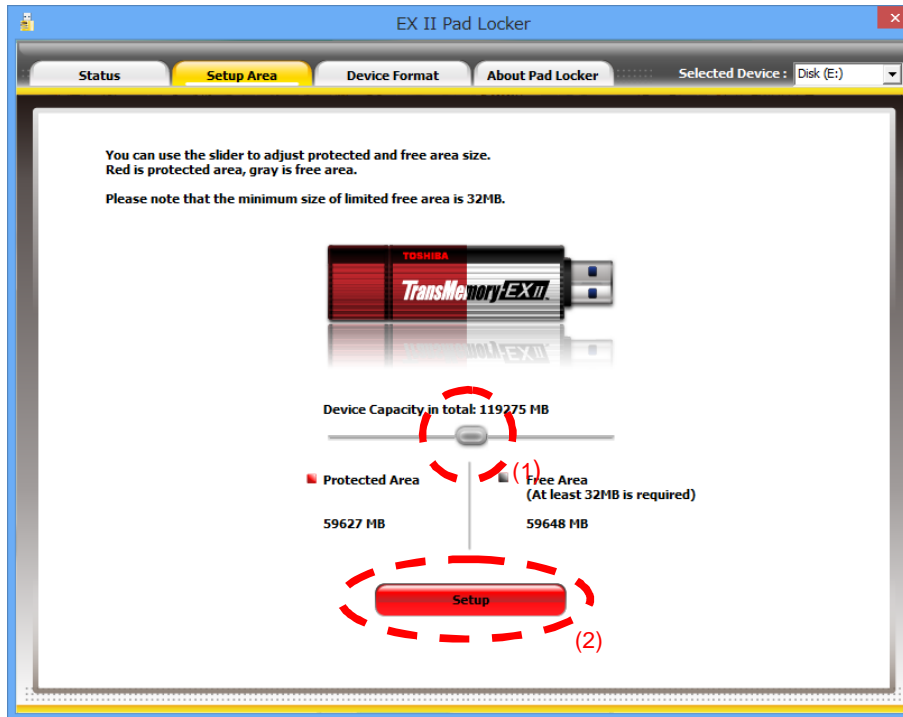
- 1) Connect the TransMemory-EX II™ to the computer. Select the "Setup Area" tab for device settings.



TOSHIBA

EX II USB Flash Memory Security Software User Manual

2) Slide the partition (1) to set the Protected Area size, and click on "Setup" (2).



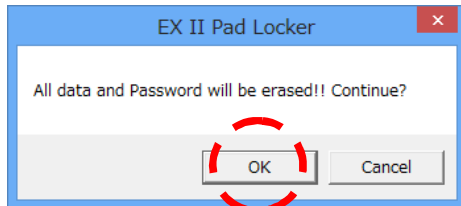
Note: The Protected Area size can be set up to 32 MB of the usable memory range (user range). The red area is the Protected Area.

Note: If no Protected Area is to be used, slide the partition all the way to the left and set the Protected Area size to 0 MB.

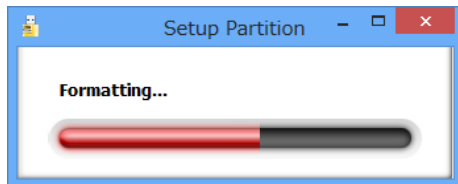
TOSHIBA

EX II USB Flash Memory Security Software User Manual

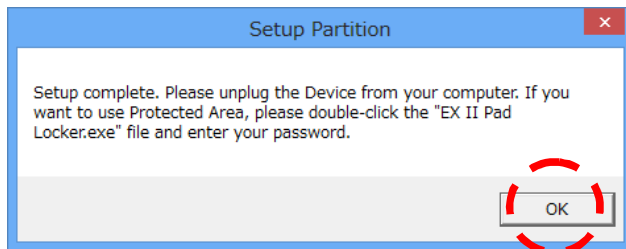
- 3) Confirm the following dialogue and click "OK".
Formatting will commence and the Protected Area adjustment will be performed.



A progress bar will be displayed during formatting.



- 4) Confirm the following dialogue and click "OK".



- 5) Remove the TransMemory-EX II™ from the computer. The Protected Area can be used when the TransMemory-EX II™ is reconnected to the computer.

Note: Security Software will be copied after formatting.

Note: After performing "Setup Area" be sure to remove the TransMemory-EX II™ from the computer. To do this it is not necessary to quit the Security Software application.

TOSHIBA

EX II USB Flash Memory Security Software User Manual

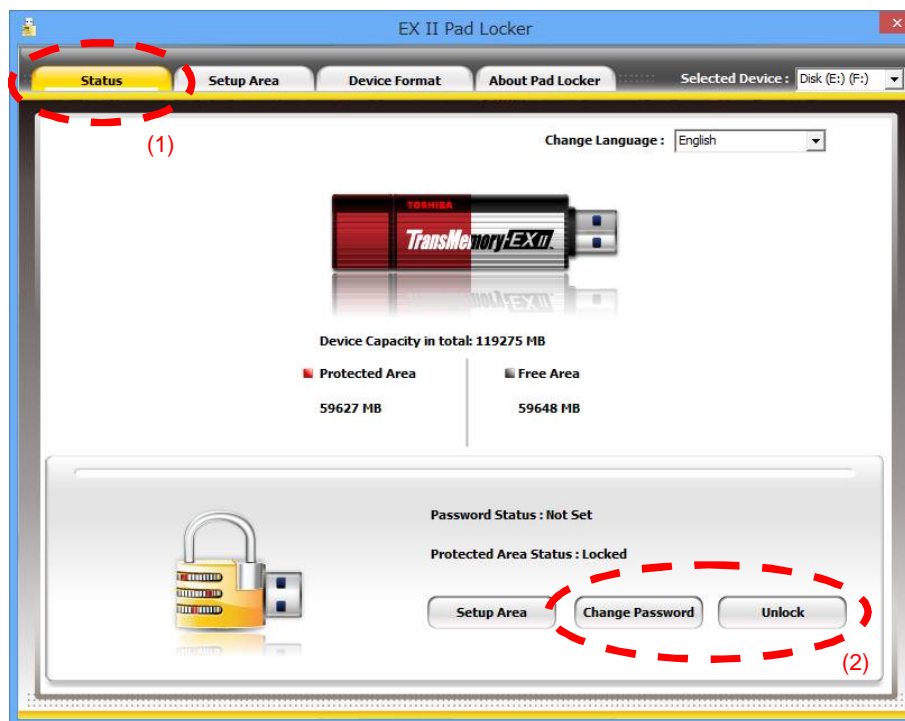
1.3. Setting Initial Password



Caution! If you forget your password, you cannot login to the Protected Area. Forgotten passwords cannot be retrieved.

In this case, perform reformatting with the Security Software "Setup Area" and initialize the password. All data including the Free Area data will be deleted.

- 1) Connect the TransMemory-EX II™ to the computer. Select the "Status"⁽¹⁾ tab and click on either "Unlock"⁽²⁾ or "Change Password"⁽²⁾.

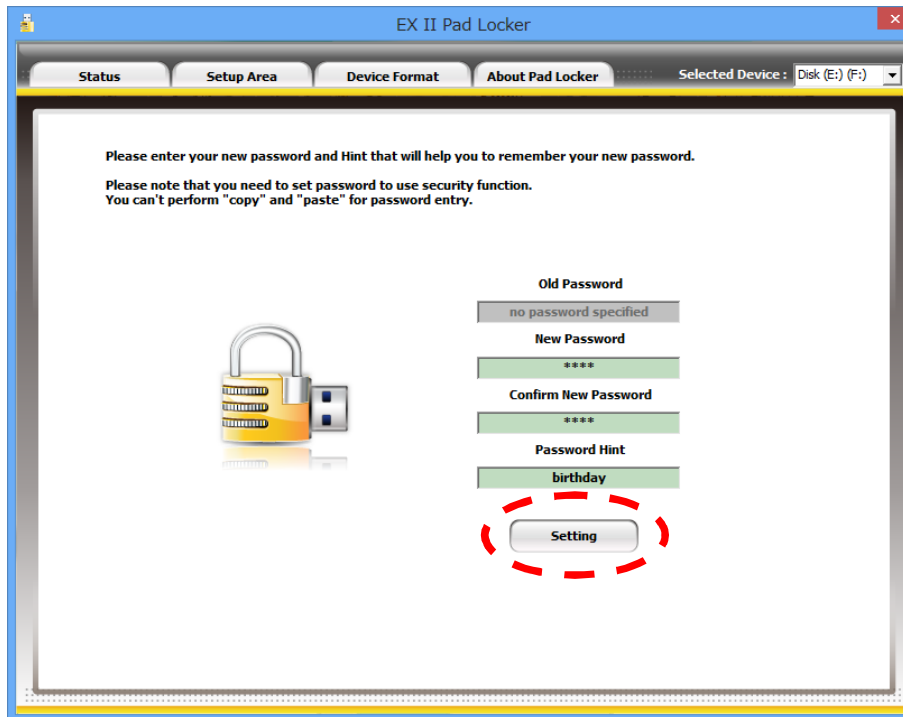


Note: If there is no Protected Area then no password can be set.

TOSHIBA

EX II USB Flash Memory Security Software User Manual

- 2) In the following dialogue, enter "New Password", "Confirm New Password", and "Password Hint", and then click "Setting".



Note: The password can be up to 21 single-space characters (uppercase and lowercase are differentiated).

Only letters, numbers, and symbols can be used (double-space characters cannot be used).

[Characters that may be used for passwords:]

	!	"	#	\$	%	&	'	()	*	+	,	-	.	/
0	1	2	3	4	5	6	7	8	9	:	;	<	=	>	?
@	A	B	C	D	E	F	G	H	I	J	K	L	M	N	O
P	Q	R	S	T	U	V	W	X	Y	Z	[¥]	^	_
`	a	b	c	d	e	f	g	h	i	j	k	l	m	n	o
p	q	r	s	t	u	v	w	x	y	z	{		}	~	

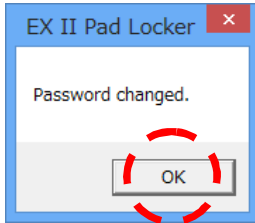
Note: The Password Hint can be 21 single- or double-spaced characters (maximum).

The 22nd and subsequent characters are deleted when "Setting" is clicked.

TOSHIBA

EX II USB Flash Memory Security Software User Manual

3) Confirm the following dialogue and click "OK".



Initialization settings are now complete.

TOSHIBA

EX II USB Flash Memory Security Software User Manual

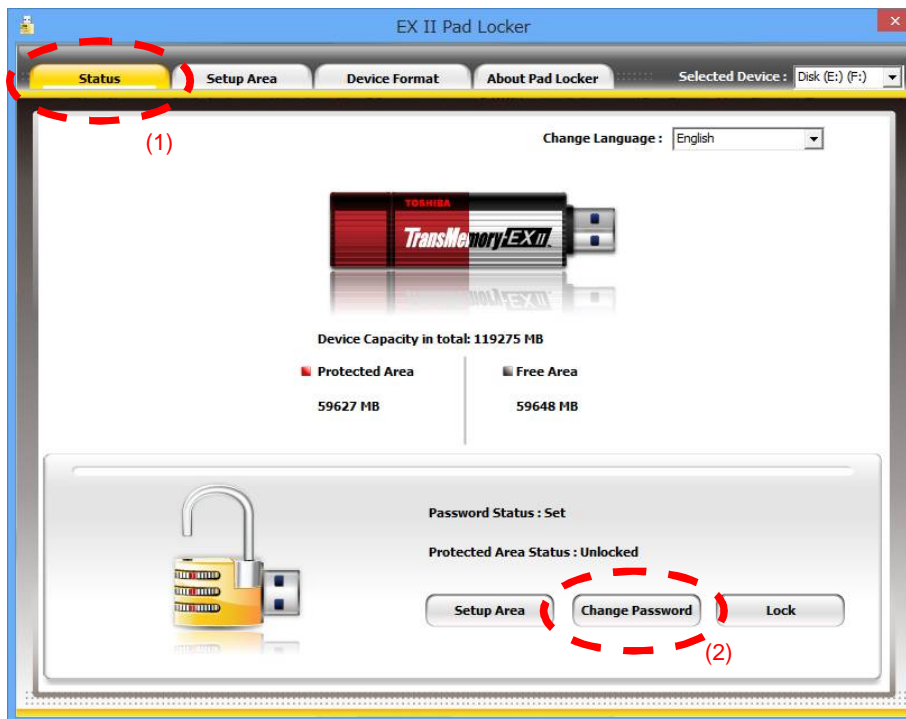
1.4. Changing Password



Caution! If you forget your password, you cannot login to the Protected Area. Forgotten passwords cannot be retrieved.

In this case, perform reformatting with the Security Software "Setup Area" and initialize the password. All data including the Free Area data will be deleted.

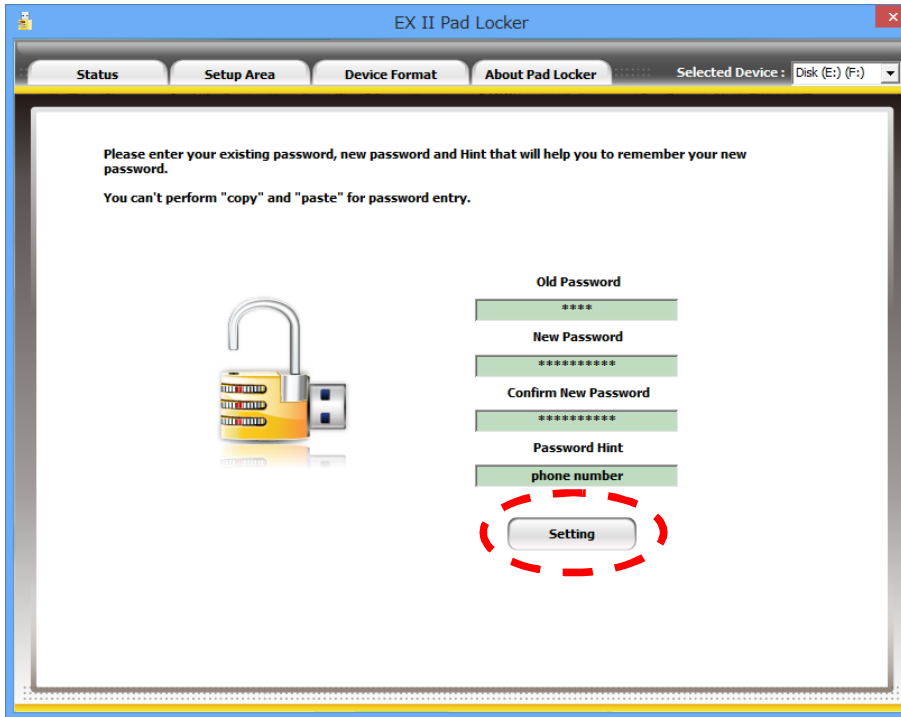
- 1) Connect the TransMemory-EX II™ to the computer. Select the "Status"⁽¹⁾ tab and click on "Change Password"⁽²⁾.



TOSHIBA

EX II USB Flash Memory Security Software User Manual

- 2) In the following dialogue enter "Old Password", "New Password", "Confirm New Password", and "Password Hint", and then click "Setting".



Note: The password can be up to 21 single-space characters (uppercase and lowercase are differentiated).
Only letters, numbers, and symbols can be used (double-space characters cannot be used).

[Characters that may be used for passwords:]

	!	"	#	\$	%	&	'	()	*	+	,	-	.	/
0	1	2	3	4	5	6	7	8	9	:	;	<	=	>	?
@	A	B	C	D	E	F	G	H	I	J	K	L	M	N	O
P	Q	R	S	T	U	V	W	X	Y	Z	[¥]	^	_
`	a	b	c	d	e	f	g	h	i	j	k	l	m	n	o
p	q	r	s	t	u	v	w	x	y	z	{		}	~	

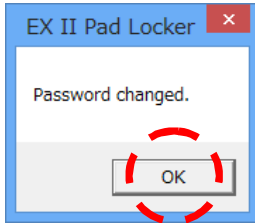
Note: The Password Hint can be 21 single- or double-spaced characters (maximum).

The 22nd and subsequent characters are deleted when "Setting" is clicked.

TOSHIBA

EX II USB Flash Memory Security Software User Manual

3) Confirm the following dialogue and click "OK".



TOSHIBA

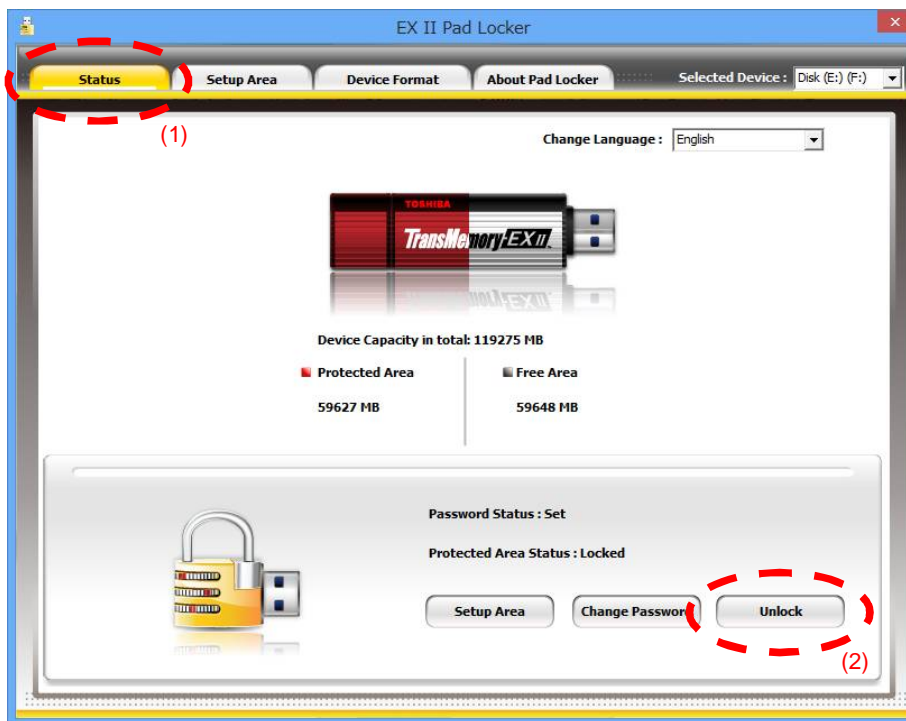
EX II USB Flash Memory Security Software User Manual

2 . Security Software Login and Logout

Be sure to connect the TransMemory-EX II™ to the computer to login and logout of Security Software.

2.1. Protected Area Login

- 1) Connect the TransMemory-EX II™ to the computer. Select the "Status"⁽¹⁾ tab and click on "Unlock"⁽²⁾.



TOSHIBA

EX II USB Flash Memory Security Software User Manual

2) Enter your password in the following dialogue and click "Login".



If you click "Forget Password?" the Password Hint recorded when you set your password will be displayed.

Forget Password?

birthday

Login

Note: If you incorrectly enter your password 3 times, you will be unable to login to the Protected Area. In this case, remove the TransMemory-EX II™ from the computer before reconnecting, or perform the page 24, 2.4. Completely Exit Security Software operation and restart Security Software.



Note: If you forget your password, select the "Setup Area" tab and use "Setup" to reformat and initialize the password. All data including the Free Area data will be deleted.

TOSHIBA

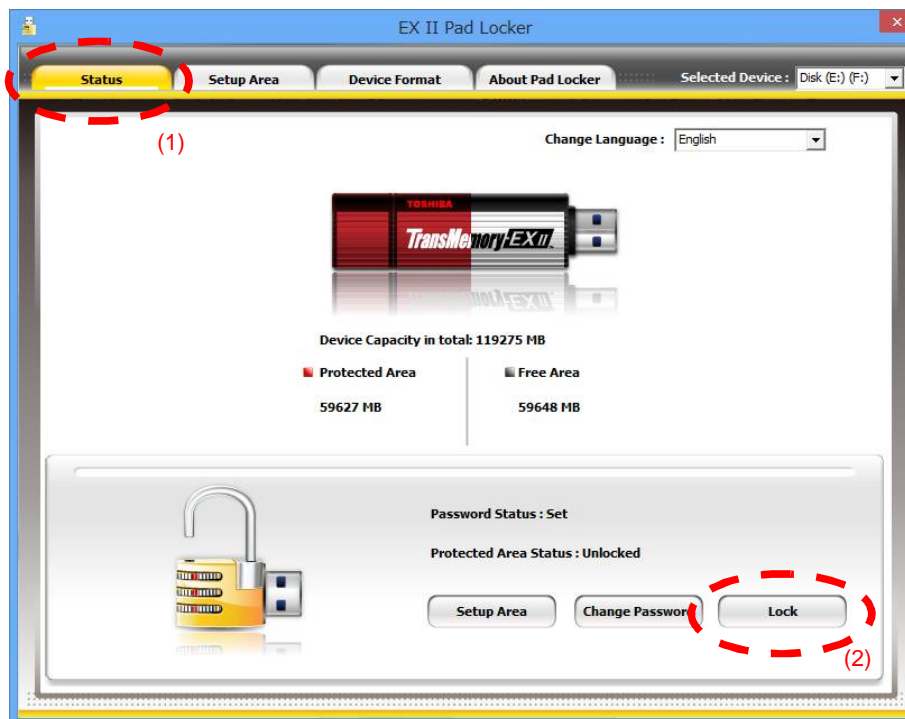
EX II USB Flash Memory Security Software User Manual

2.2. Protected Area Logout

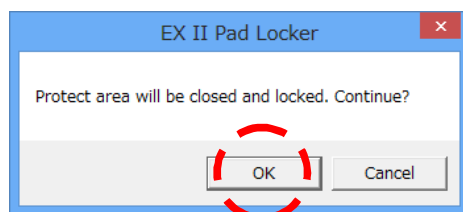


Caution! Complete all tasks within the Protected Area before logging out.
Logging out with tasks in progress will result in unsaved data.

1) Select the "Status"⁽¹⁾ tab and click on "Lock"⁽²⁾.

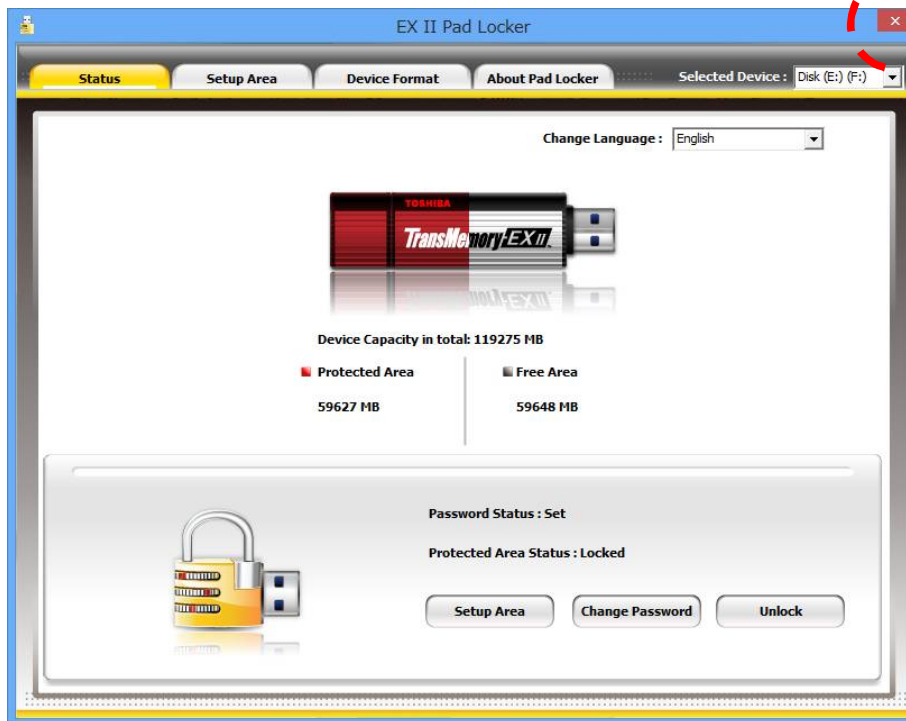


2) Confirm the following dialogue and click "OK".



2.3. Finishing Security Software Operation

- 1) Click on the "x" in the Security Software upper right corner to temporarily close the Security Software window. (The Protected Area can still be used.)



Note: To reopen the Security Software window, double-click on the "EX II Pad Locker" icon in the system tray.



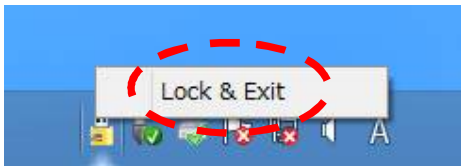
Note: Depending on your computer's settings, the icon may not appear in the system tray. In this case, display the full system tray and operate.

2.4. Completely Exit Security Software



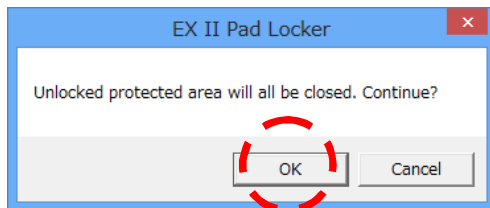
Caution! Complete all tasks within the Protected Area before quitting. Logging out with tasks in progress will result in unsaved settings.

- 1) Right-click on the "EX II Pad Locker" in the system tray and select "Lock & Exit" to completely exit Security Software.



Note: Depending on your computer's settings, the icon may not appear in the system tray. In this case display the full system tray and operate.

Note: If the Protected Area has not yet been closed the following dialogue will appear. Click "OK" to confirm.



To use Security Software again, double-click on the Security Software icon "EX II Pad Locker.exe" to startup Security Software.

Chapter 5. Security Software Practical Usage

In this section, usage other than security settings of the Security Software for the TransMemory-EX II™ is explained. These uses are possible without performing security settings.

1. Format the TransMemory-EX II™ to FAT32

Be sure to connect the TransMemory-EX II™ to the computer to perform formatting.

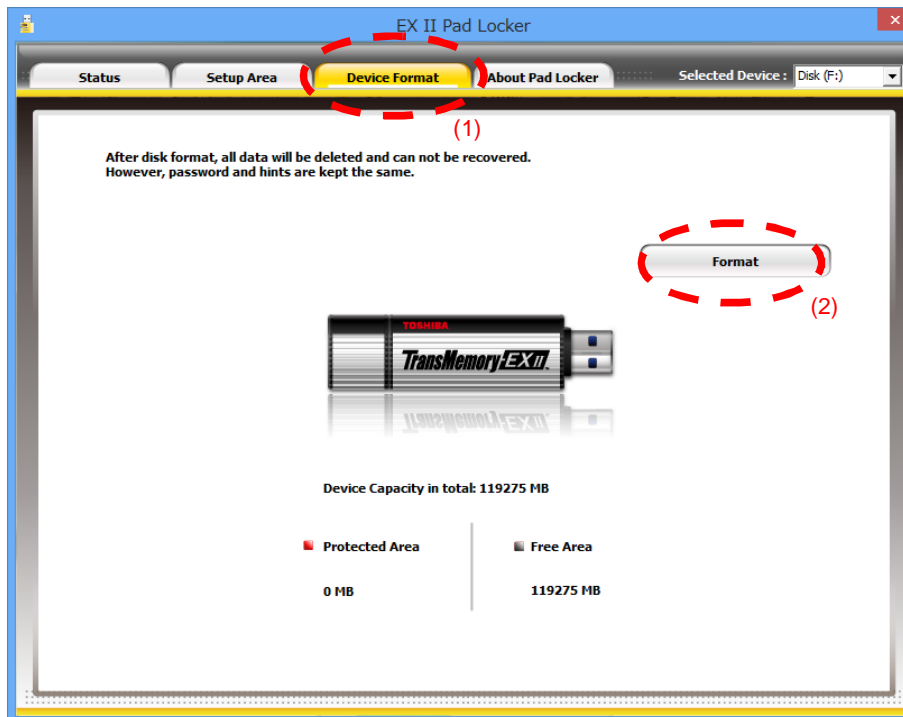
To open Security Software please refer to page 9, 1.1. Security Software Startup.



Caution! This operation will delete all data and format the file system to FAT32.

Before formatting, be sure to backup all needed data on another drive.

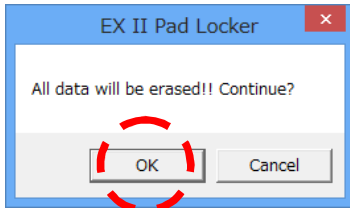
1) Select the "Device Format" ⁽¹⁾ tab and click on "Format" ⁽²⁾.



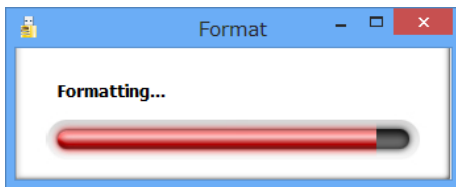
TOSHIBA

EX II USB Flash Memory Security Software User Manual

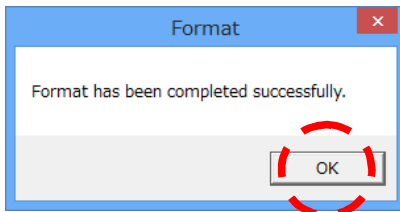
- 2) Confirm the following dialogue and click "OK".
Formatting will begin.



A progress bar will be displayed during formatting.




- 3) Confirm the following dialogue and click "OK".



Formatting is complete.

Note: Security Software will be copied after formatting.

To exit Security Software refer to page 24, 2.4. Completely Exit Security Software.

	<p>Note: This operation will not initialize the set password and area settings. If the Protected Area is unlocked, both the Protected Area and Free Area will be formatted and all data will be erased. If the Protected Area is locked, only the Free Area will be formatted.</p>
---	---

TOSHIBA

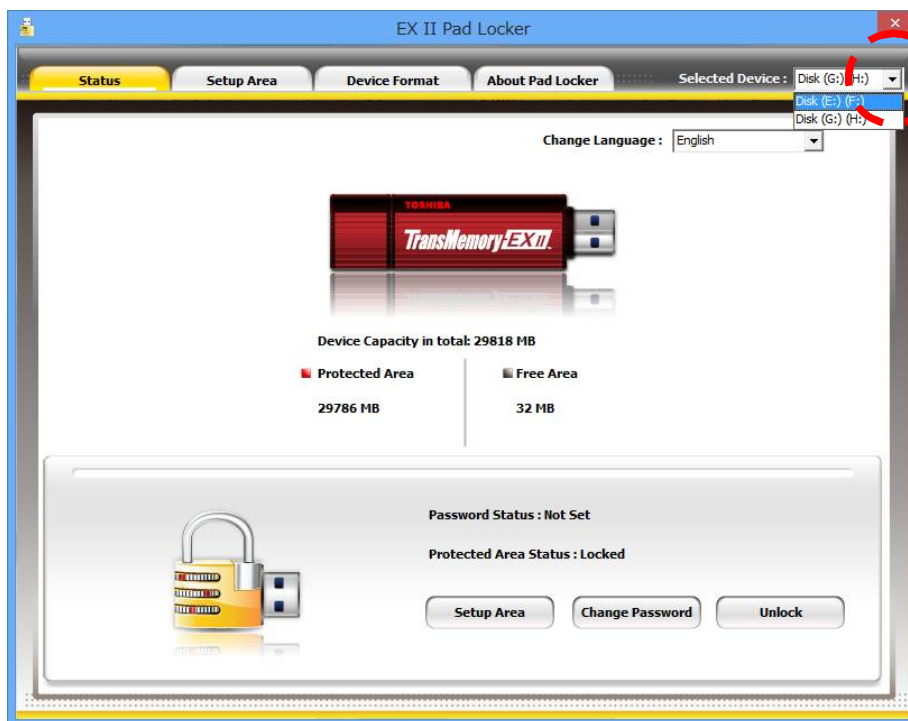
2 . Switching Between Multiple TransMemory-EX II™ Devices Connected Simultaneously

Be sure to connect the TransMemory-EX II™ devices to the computer in order to use Security Software.



Caution! When performing each type of operation in the Security Software with multiple TransMemory-EX II™ devices connected, be sure to confirm that the desired device is selected.
When completely exiting Security Software with multiple TransMemory-EX II™ devices connected, first lock the Protected Area of each device.

- 1) Click on the “ (pull-down menu)” "Selected Device" in the Security Software upper right, and select the desired device.



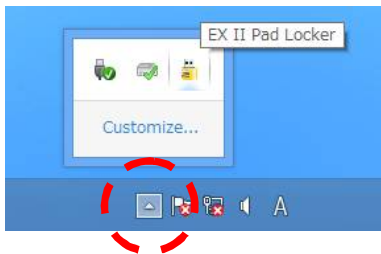
Chapter 6: Frequently Asked Questions

Q: Security Software does not open when I double-click on the Security Software icon.

A: Is the application already open? Multiple Security Software applications cannot be opened.

Q: The EX II Pad Locker icon is not visible in the system tray.

A: Is the full system tray displayed in the task bar? Click the ▲ arrow to display hidden indicators as below.



Q: When I connect the TransMemory-EX II™ to my computer, 2 new drive names are displayed.

A: The TransMemory-EX II™ is partitioned into 2 drives, the Free Area and Protected Area.

Q: I do not need the Protected Area.

A: If you are already using the Protected Area, use the slider in the device settings screen to set the Protected Area size to 0 MB and click "Setting".

Q: I cannot set the Free Area size to 0 MB.

A: It is not possible to set the full area to Protected Area. The Free Area must be at least 32 MB.

Q: Can I use the TransMemory-EX II™ without a password?

A: If only using the Free Area, no password is necessary. A password is required to use the Protected Area.

Q: I accidentally deleted the Security Software.

A: Please download the software from the Toshiba website.

TOSHIBA

EX II USB Flash Memory Security Software User Manual

FAQ Continued:

Q: Can this Security Software be used with other USB flash memory devices?

A: Please refer to the website for compatibility.

Q: I would like to use the Protected Area on other computers.

A: Please copy the Security Software to the TransMemory-EX II™ and take it with you.

Q: Can I format the 64 GB model and 128 GB model to FAT32 format?

A: Please click on "Format" in the device format screen.

Q: I would like to use the Protected Area and Free Area with the NTFS or exFAT file system.

A: After making settings using Security Software, please use the Windows OS function to perform formatting.

It is also possible to format each area to a different file system respectively.

Chapter 7: Contact Us

Please contact Customer Support for issues not resolved by this manual or for questions regarding the EX II Pad Locker.

<http://www.toshiba.co.jp/p-media/wwsite/contact.htm>

End